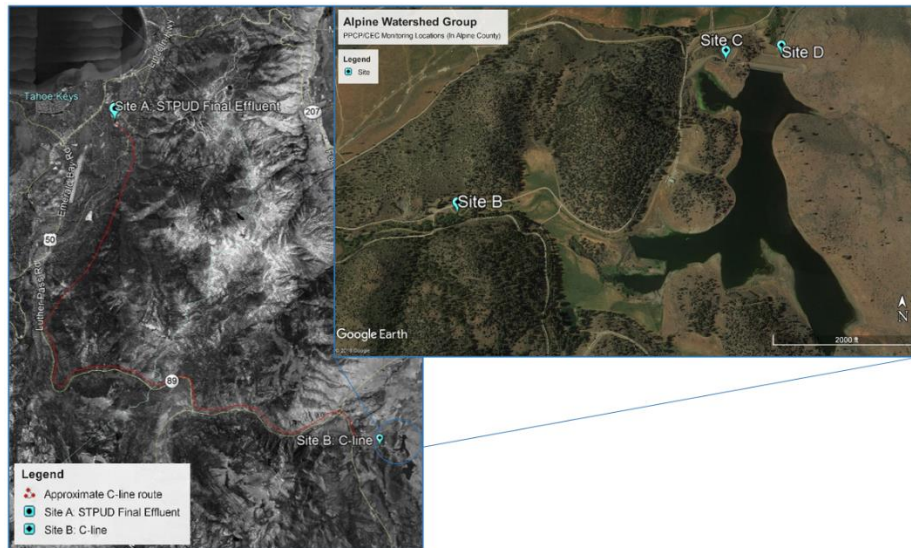


PPCP Monitoring Project

On December 5, 2017, Alpine County contracted Alpine Watershed Group to monitor the secondary treated wastewater effluent that travels from South Lake Tahoe Public Utility District's facility to Harvey Place Reservoir and downstream for Pharmaceuticals and Personal Care Products (PPCPs) and other Contaminants of Emerging Concern (CECs). PPCPs and CECs represent human bio-indicators that may impact aquatic organisms or agriculture.



Sampling Locations



Summary of 2nd Sampling Event

The second monitoring event collected samples at only Site D on July 9, 2018. At this site the compounds TCPP, nonylphenol, and caffeine were most abundant. These findings were similar to the first monitoring event's most abundant compounds but with fewer compounds results greater than 1,000ng/L. Twenty-two of the forty compounds under examination were detected. However, even of these 22 compounds, nearly all measured at relatively low levels. The lab reports in nanograms per liter (ng/L) which is equal to one part per trillion (ppt). To better understand how small 1 part per trillion is you could think of 1 second in approximately 32,000 years equaling 1 ppt.

Most Abundant Compound Results (ng/L)

Compound	Description/Function	April Results			July
		Site A	Site B	Site C	Site D
TCPP	Flame retardant	2500	2300	1800	1800
Nonylphenol	Non-ionic detergent metabolite	1700	1500	630	1300
TDCPP	Flame retardant	300	360	300	830
Sulfamethoxazole	Antibiotic	1500	1100	730	520
Naproxen	Anti-inflammatory	1100	990	400	150
Iohexol	Contrast agent for x-ray	86	94	430	420
DEET	Insect repellent	600	780	460	140
Caffeine	Stimulant	68	170	5400	1400

For more information please contact awg.mo.loden@gmail.com or see the full April report at www.alpinewatershedgroup.org.